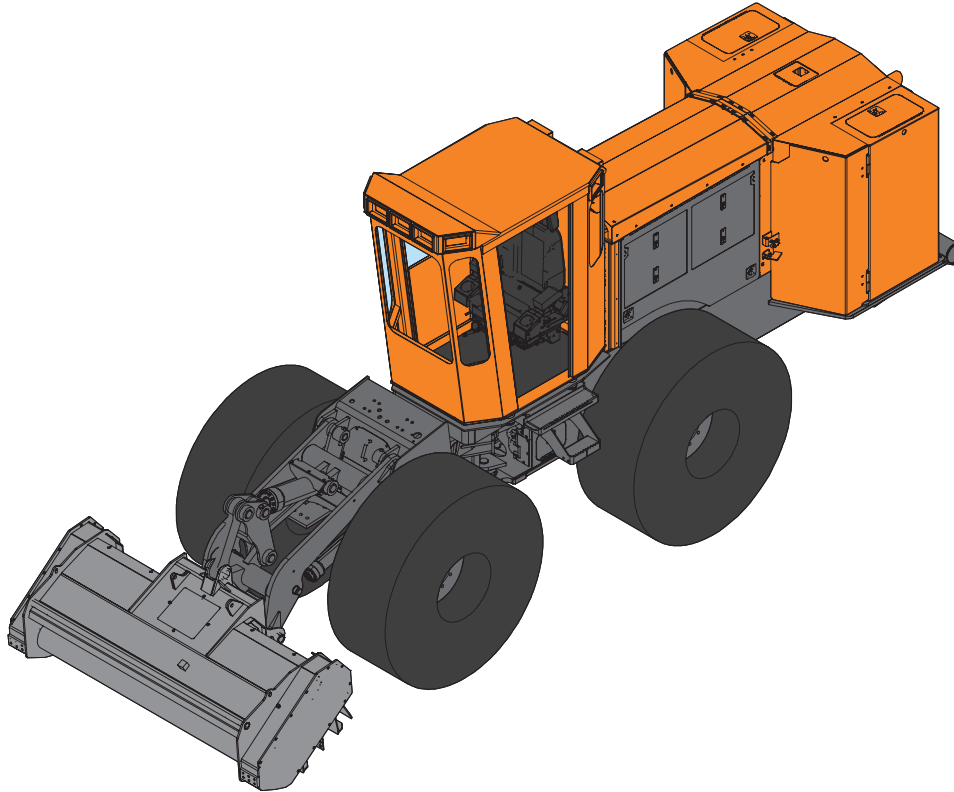




BARKO 920 MULCHER



STANDARD SPECIFICATIONS & FEATURES

Engine

Make: Cummins
Model: QSB 6.7 L Tier 3
Horsepower: 230 (172 Kw)
RPM: 1800
Bore & Stroke: 4.21 x 4.88 (107 mm x 124 mm)
Number of Cylinders: 6
Fuel Tank Capacity: 80 gal (303L)
Air Cleaner: Dual Element DryType (with precleaner)
Exhaust System: Muffler (with fire wrap)
Radiator: High Capacity Anti-ClogType (with automatic reversing fan)

Axles

Type: All wheel drive planetary axles.
Front: Rigid with hydraulic differential lock and service brake.
Rear: Rigid with hydraulic differential lock.

Steering Articulation: 45° each way with 18.4-26 tires.
Oscillation Joint: 15° each way.

Hydraulic Cylinders

Cylinder	Bore	Rod	Stroke
Lift	3.0" (76.2mm)	2.0" (50.8mm)	20.0" (508mm)
Tilt	5.0" (127mm)	2.5" (63.5mm)	13.25" (336mm)
Steering	3.0" (76.2mm)	1.75" (44.5mm)	13.0" (330mm)

Hydrostatic Transmission:

Variable displacement pump and motor with pilot operated controls, combined with a two-speed transfer case to provide an ideal combination of torque and speed range.

Wheels and Tires:

Standard: (80" (2.03m) Machine Width) 18.4 - 26 14 ply.
Optional: (84" (2.13m) Machine Width) 23.1L-26 14 ply.

Brakes

Service/Secondary: Hydrostatic-dynamic braking with foot pedal operated front axle internal wet disc brake.

Parking/Emergency: Switch operated control on dash with hydraulically released brake in front axle..

Hydraulics

Lift/Tilt/Steer Pump: Variable displacement load sensing piston pump producing 34 GPM (129 L/min) @ 3,600 PSI (24,821kPa).

Propel pump: Hydrostatic, variable displacement piston producing a maximum of 48 GPM (182 L/min) @ 5,500 PSI (37,921 kPa).

Attachment Pump: Variable displacement piston producing a maximum of 67 GPM (254 L/min) @ 5,500 PSI (37,921 kPa).
High Pressure 10 Micron Return Filter.

65 gallon (246 L) hydraulic reservoir.

Oil Cooler: High capacity intergrade with Radiator and Charge Air Cooler.

Steering

Joystick controlled.

Turning radius: 13' 8" (4.20 m) outside tires.

Degrees articulation: 45° each direction with 18.4 - 26 & 23.1L-26 tires. Larger tires increase turning radius.

BARKO 920 MULCHER

Travel Speeds w/18.4 - 26 tires

Low gear unlocked	0-6.0 MPH (0-9.7 kmh)
High gear unlocked	0-15.0 MPH (0-24.1 kmh)

Electrical

12 volt starting system.
160 amp alternator
Dual 31 series batteries.
Ignition Key

MD3 Display and User Interface

- Electronic Gauges - hydraulic oil temp, hydraulic oil level, fuel level, air pressure, hydraulic head pressure, volt meter, engine coolant temp, engine oil pressure, hour meter, along with various other engine parameters
- Warning Icons with buzzer for low hydraulic oil level, drive filter service, attachment pump filter service, attachment high pressure filter service, engine oil pressure low and engine temperature high
- Indicator light for drive low lock

Service Features

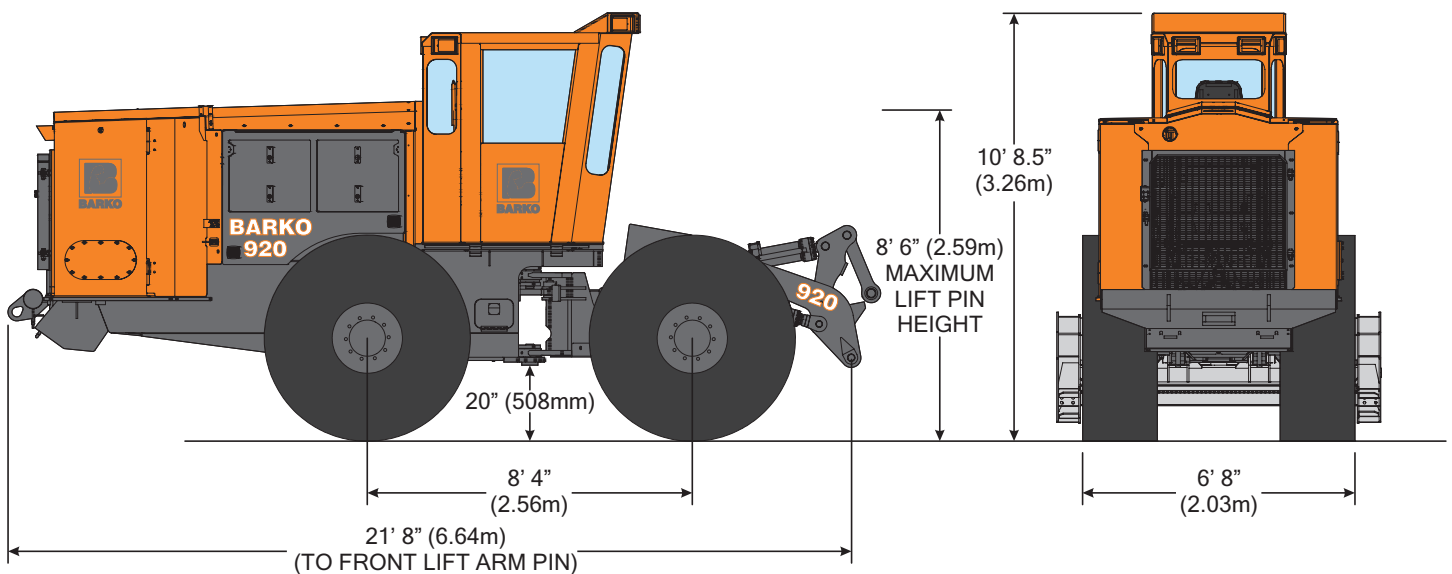
Grouped single point remote grease fittings for steering cylinders and axles.
Reservoir shroud doors swing out for access to various components, side shroud doors swing up, assisted by gas springs, for access to engine compartment.
Side panels are removable.
Transmission side, front and bottom covers are removable for ease of service.
Weight without attachment 22,000 lbs.

Operators Cab

ROPS, FOPS and OPS certified.
Ergonomically designed for comfort and ease of control with sound and vibration insulation.
Sealed and pressurized with cyclonic filter.
Tinted lexan glass on all windows.
Deluxe adjustable bucket seat with 4 point harness.
Three front mounted cab lights,
Two front side mounted cab lights,
Two rear mounted cab lights,
Two rear side mounted cab lights.
Air Knife on front windshield for dust and debris removal.
Left hand joystick for steering with 5 push buttons.
Right hand joystick for lift and tilt with 5 push buttons
Buttons for horn, front differential lock, low lock, float on/off, float override, gate, plus 3 extra buttons can be arranged to suit the end user.
Pilot operated double foot pedal for travel.
Foot operated hydraulic secondary brake.
Switch operated parking/emergency brake.
CAN-bus keypad to activate various machine functions.
Climate controlled heating and air conditioning with defroster.
AM-FM radio XM satellite ready CD player.

Optional Equipment

Hydraulic Winch - 20,000 lbs capacity
Joystick travel control
Air Reservoir Maintenance Quick Connect
Electronic controlled attachment terrain float
AFEX automatic fire suppression system
Rear view camera



Barko Hydraulics reserves the right to change specifications and prices without notice in order to follow its policy of constantly striving to manufacture a better product without incurring any liability to provide these new features on any units previously manufactured.



BARKO HYDRAULICS, LLC

One Banks Avenue
Superior, Wisconsin 54880
(715) 392-5641 FAX: (715) 392-3931

Distributor: